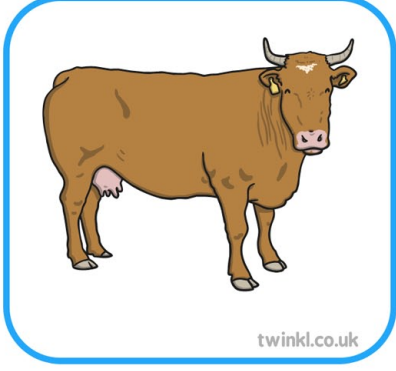


Diurnal and Nocturnal Sorting Activity





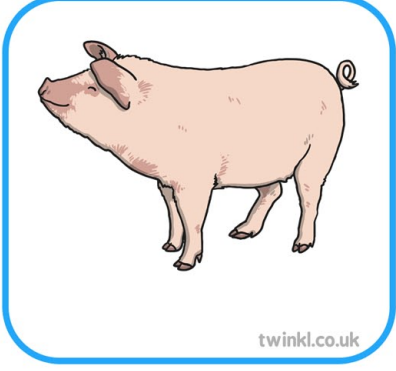
twinkl.co.uk



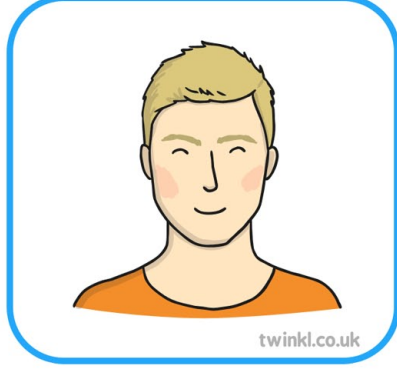
twinkl.co.uk



twinkl.co.uk



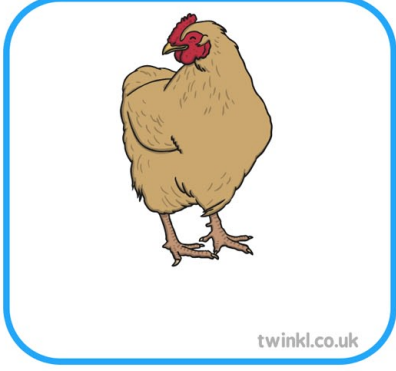
twinkl.co.uk



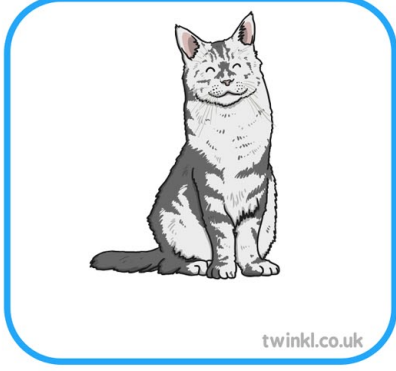
twinkl.co.uk



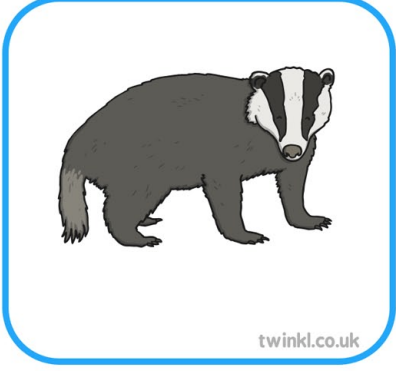
twinkl.co.uk



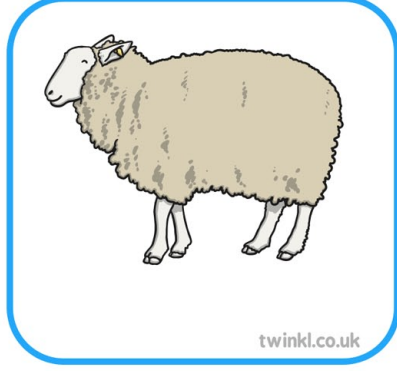
twinkl.co.uk



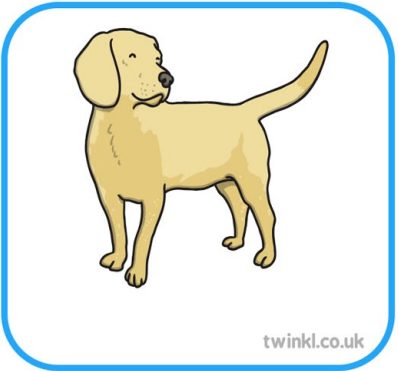
twinkl.co.uk



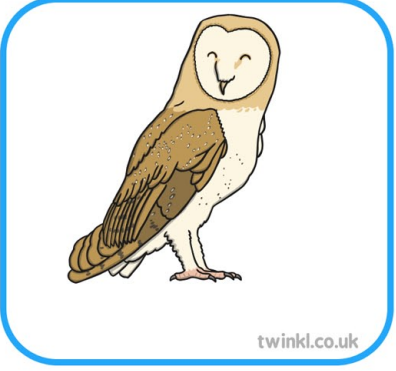
twinkl.co.uk



twinkl.co.uk



twinkl.co.uk



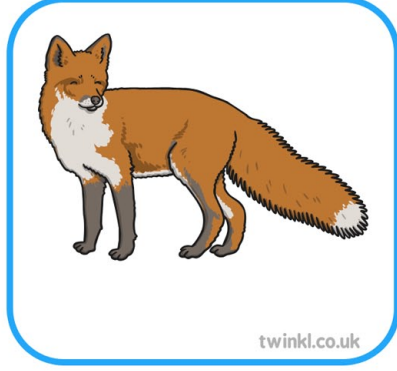
twinkl.co.uk



twinkl.co.uk



twinkl.co.uk



twinkl.co.uk

Please remove before beginning the activity.

Answers: Diurnal Animals - cow, bee, pig, human, chicken, sheep, dog, bird. Nocturnal Animals - hedgehog, toad, cat, badger, owl, bat, fox